



C5S WAGON EVOLUTION

Ref.



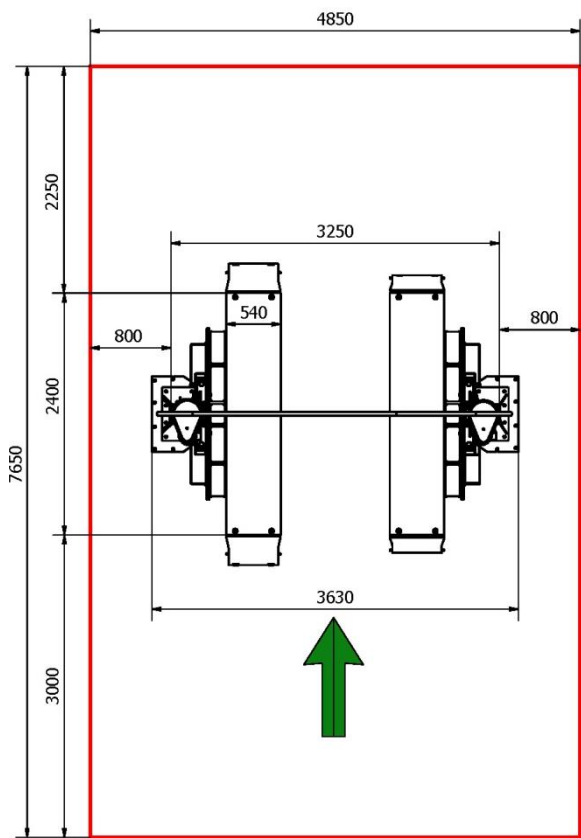
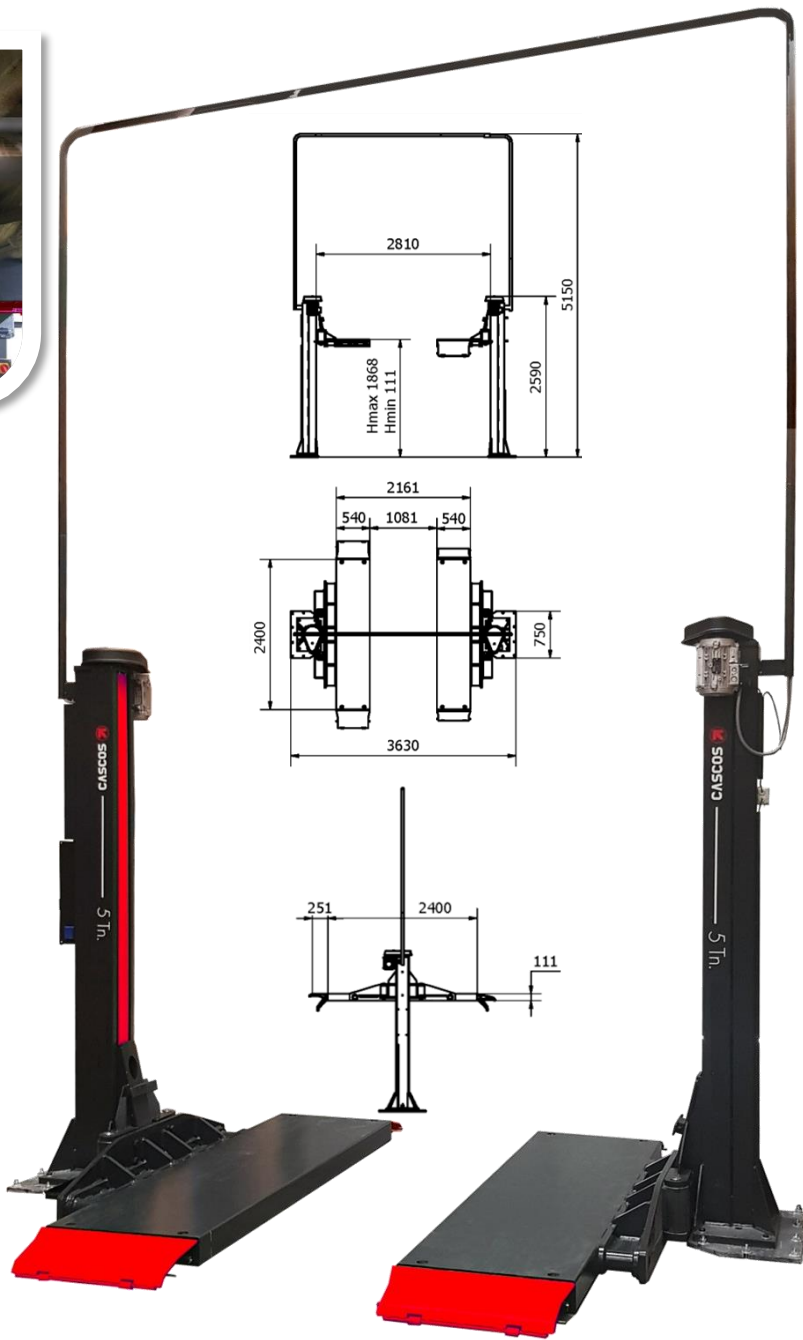
13990

5000 Kg

1510 Kg

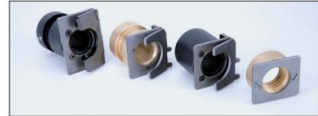
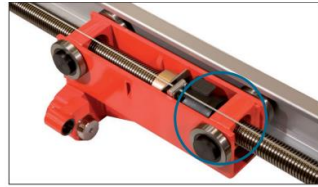
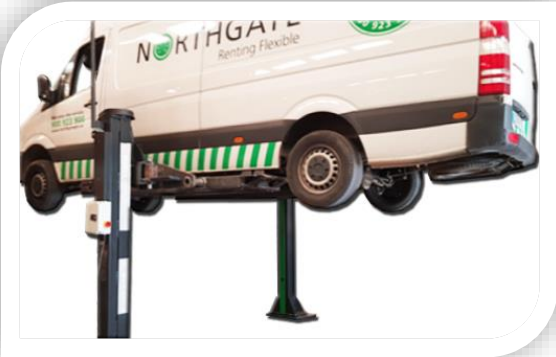
400/230V - 3+3kW

40''



13990

2 POST LIFT C5S WAGON EVOLUTION



ILC SYSTEM (INTELLIGENT LIFT CONTROL)

A NEW GENERATION OF LIFTS

ILC SYSTEM BY CASCOS keeps the user informed about diverse working parameters (nº of cycles, lasting time to revision, total and partial working time) very useful to optimize his work shop management.

Also provides with clear info concerning possible elements to be checked, which ensures a much more user friendly experience

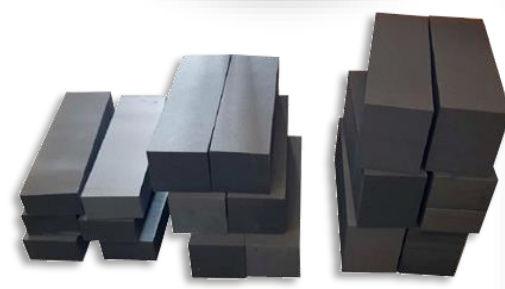
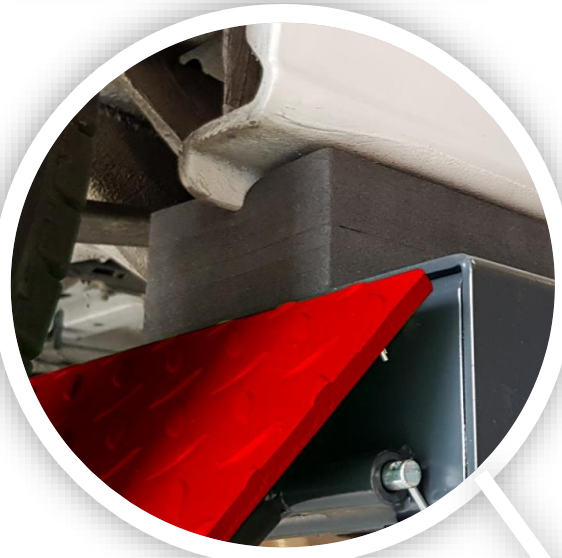


Most performant synchronisation in the market

High functionality:

- Tested in 80 kind of repairing interventions
- Increases hugely performances in terms of time and safety =

Sensible gain of profitability when working with commercial vehicles



Available pads:
(in mm)

- 6 pads 500x150x80
- 6 pads 500x150x130
- 6 pads 500x150x180



- Extra-stretchable 850kg supporting pads
- Water-proof, oil-proof, salt-proof, mud-proof...

